

**Low Endotoxin Level Peptones** that improve cell density and protein production for eukaryotic and prokaryotic cell cultures in **BioPharma process**.



**PRODUCT DESCRIPTION:**

EndoLow Casein Peptone is a pancreatic digest of casein. The controlled manufacturing process ensures a low endotoxin content.

**POTENCIAL APPLICATIONS:**

It is a nutrient source that support requirements of cells culture. It can be used in tissue culture media, vaccines and antibodies production and a wide BioPharma process.

**PHYSICAL CHARACTERISTICS:**

Fine powder, yellow to light brown colored and no foreign particles.

Chemical Characteristics	Specifications	Typical Value
Amino Nitrogen (AN)	Minimum 3,90%	4,20%
Total Nitrogen (TN)	Minimum 10,00%	13,13%
AN/TN	N/A	32,00
Loss on drying	Maximum 6,00%	3,30%
Ash	Maximum 15,00%	6,00%
pH (2% solution)	6,50 – 7,50	6,80

Microbiological Characteristics	Specifications	Minerals	Typical Value
Endotoxins	<200 EU/g	Calcium	0,019%
Standard plate count	Less than 1500 CFU/g	Magnesium	0,0079%
Yeasts and molds	Less than 100 CFU/g	Potassium	1,3%
Coliforms	Negative	Sodium	2,1%
Salmonella	Negative		

**PACKAGING**

The dry product is packaged in polyethylene bags into reinforced fiber board drums.  
 25 kg | 50 kg

**STORAGE**

Keep in original packaging closed, in a dry and cool place.  
 Hygroscopic product.

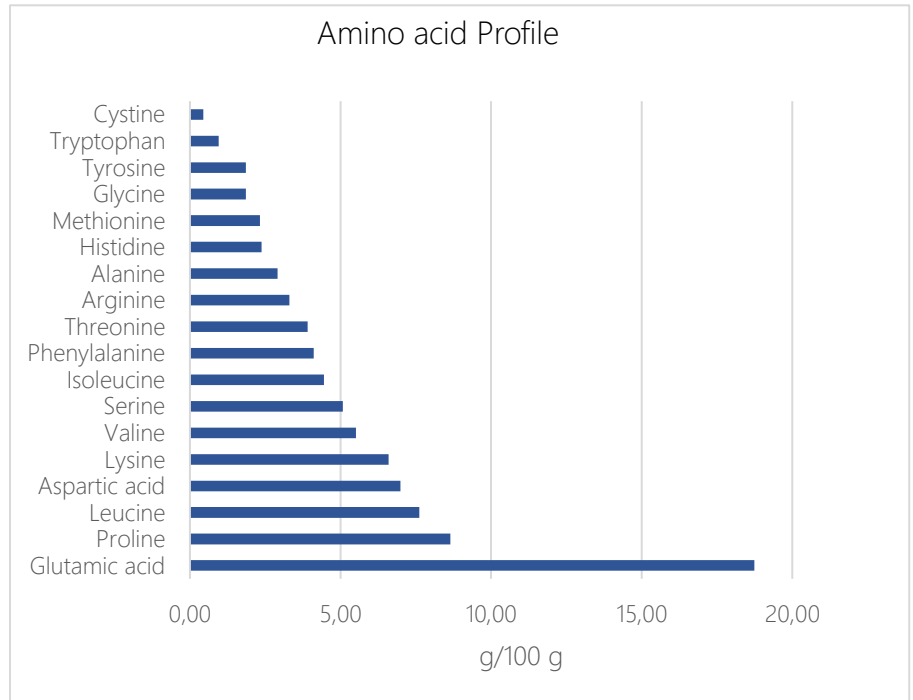
**RETEST**

4 years after its manufacturing date.

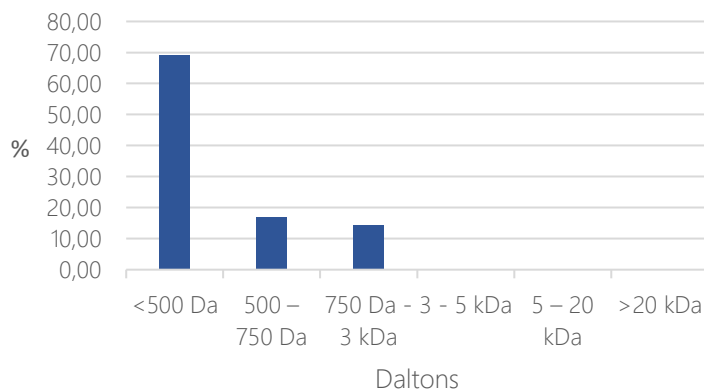
**CERTIFICATIONS**

ISO 9001  
 SADER-SENASICA

Amino acid	g/100g
Glutamic acid	18,74
Proline	8,65
Leucine	7,62
Aspartic acid	6,99
Lysine	6,60
Valine	5,51
Serine	5,08
Isoleucine	4,45
Phenylalanine	4,11
Threonine	3,91
Arginine	3,30
Alanine	2,91
Histidine	2,38
Methionine	2,32
Glycine	1,86
Tyrosine	1,86
Tryptophan	0,95
Cystine	0,44



### MOLECULAR WEIGHT DISTRIBUTION



Molecular weight distribution %	
<500 Da	69,00
500 - 750 Da	16,80
750 Da - 3 kDa	14,20
3 - 5 kDa	0,00
5 - 20 kDa	0,00
>20 kDa	0,00
Average Molecular Weight Da	265,00