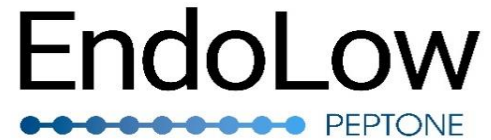


Low Endotoxin Level Peptones that improve cell density and protein production for eukaryotic and prokaryotic cell cultures in **BioPharma process**.



PRODUCT DESCRIPTION:

EndoLow Meat Peptone (Bovine) is produced by the controlled enzymatic digest of animal tissue that ensure a low level of endotoxins.

POTENCIAL APPLICATIONS:

It provides peptides and amino acids that support the general nutritional requirements in a wide cells culture. It can be used in tissue culture media, vaccines and antibodies production and a wide BioPharma process.

PHYSICAL CHARACTERISTICS:

Fine powder, beige to light brown colored and no foreign particles.

Chemical Characteristics	Specifications	Typical Value
Amino Nitrogen (AN)	Minimum 3,40%	3,70%
Total Nitrogen (TN)	Minimum 10,00%	12,30%
AN/TN	N/A	30,00
Loss on drying	Maximum 6,00%	2,70%
Ash	Maximum 15,00%	9,20%
pH (2% solution)	6,50 – 7,50	6,90

Microbiological Characteristics	Specifications	Minerals	Typical Value
Endotoxins	<200 EU/g	Calcium	0,072%
Standard plate count	Less than 5000 CFU/g	Magnesium	0,029%
Yeasts and molds	Less than 100 CFU/g	Potassium	2,70%
Coliforms	Negative	Sodium	2,50%
Salmonella	Negative		

PACKAGING

The dry product is packaged in polyethylene bags into reinforced fiber board drums.
 25 kg | 50 kg

STORAGE

Keep in original packaging closed, in a dry and cool place.
 Hygroscopic product.

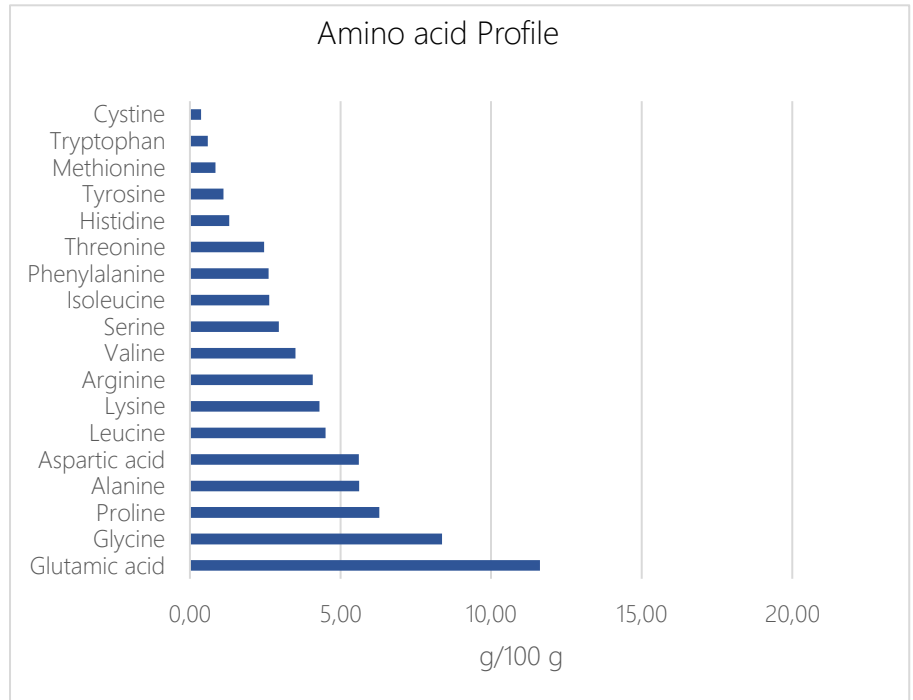
RETEST

4 years after its manufacturing date.

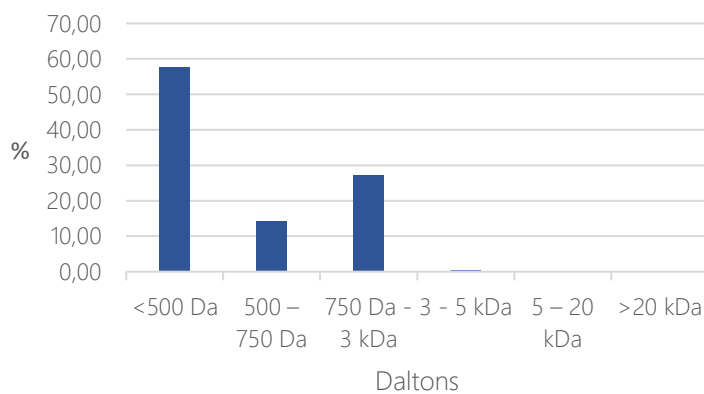
CERTIFICATIONS

ISO 9001
 SADER-SENASICA

Amino acid	g/100g
Glutamic acid	11,62
Glycine	8,37
Proline	6,29
Alanine	5,62
Aspartic acid	5,61
Leucine	4,50
Lysine	4,30
Arginine	4,08
Valine	3,50
Serine	2,95
Isoleucine	2,63
Phenylalanine	2,61
Threonine	2,46
Histidine	1,31
Tyrosine	1,11
Methionine	0,85
Tryptophan	0,59
Cystine	0,37



MOLECULAR WEIGHT DISTRIBUTION



Molecular weight distribution %	
<500 Da	57,80
500 – 750 Da	14,30
750 Da - 3 kDa	27,30
3 - 5 kDa	0,50
5 – 20 kDa	0,10
>20 kDa	0,00
Average Molecular Weight Da	148,00